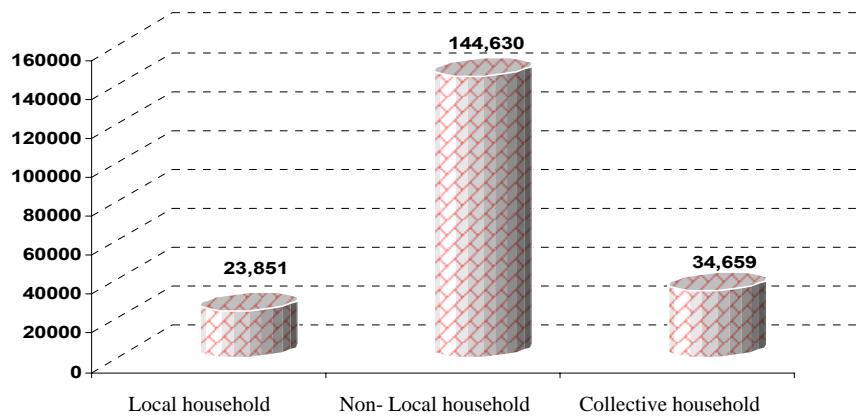


Demographic Characteristics of Population 2005

- In the year 2005 , total population in Dubai Emirate has reached (1,321,453) individuals of which (989,305) are males representing (74.86%), and (332,148) are females representing (25.14%) of the total population included in the to census which carried out in Dubai Emirate.
- In the period falling between (2000 -2005) censuses revealed that the population growth in Dubai Emirate has percents (7.32%) for males (8.24%) and (4.83%) females.
- The average male population growth in Dubai Emirate is higher than that of females. This is primarily due to a big percentage of non-local labour force especially unskilled one which comes to Dubai without families. Such increase resulted in the rise of male sex to (298 males for each 100 females) in the year 2005.
- The sex ratio differs significantly between rural and urban areas where male population in Dubai urban area is threefold than females in the year 2005 (299 males for each 100 females). However, in Dubai rural area male population is more than double the female (216 males for each 100 females). Also, the sex ratio differs considerably among different areas inside the Emirate.
- The average household size including servants reached (4.16) , (4.14) individuals in urban areas to (5.64) in rural areas. Thus, the average differs considerably among different areas inside the Emirate.
- On the level of the Emirate ,Population density reached (1.69) individuals per room , year 2005. The population density differs from (1.69) individuals for each room in urban areas to (1.67) individuals per room in the rural areas. The average differs greatly among different areas inside the Emirate. The difference in population density is due to the difference in service and economic activities inside the Emirate of Dubai and the number of buildings and rooms occupied in each area.

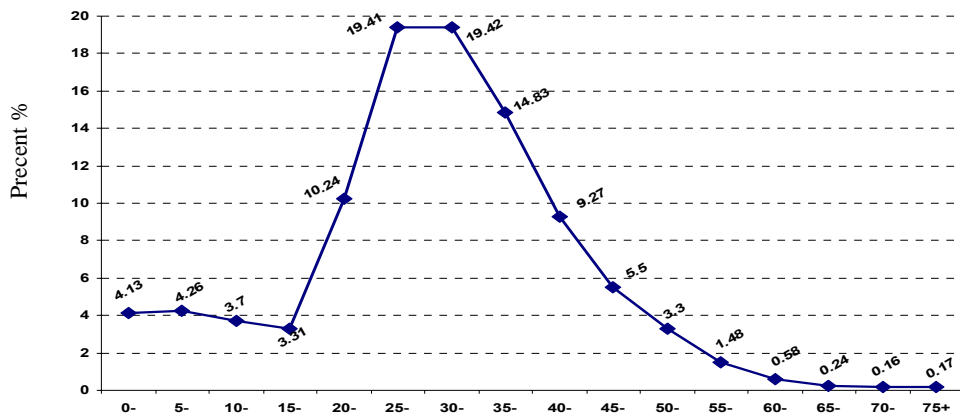
- The total number of local households in Dubai Emirate has reached (23,851) representing (11.74%) of total families included in the census : (203.140) families. Yet, the total number of non-local household included in the census was (144,630), representing (71.20%) of the total families . However, the total of group families has reached (34,659) representing (17.06%) of total families included in the census.
- However, the age relatively proportional structure of the population can be distributed according to the five-age groups: from (0-4) years to (75 years and more) as provided herein in the following schedule and Figure:

**Household by Type -Emirate of Dubai
2005**



Age groups	0-	5-	10-	15-	20-	25-	30-	35-	40-	45-	50-	55-	60-	65-	70-	75+	Total
Males	2.12	2.21	1.94	1.75	7.14	15.53	15.78	12.12	7.43	4.38	2.58	1.14	0.40	0.15	0.09	0.10	74.86
Females	2.01	2.05	1.76	1.56	3.10	3.88	3.64	2.71	1.84	1.12	0.72	0.34	0.18	0.09	0.07	0.07	25.14
Total	4.13	4.26	3.70	3.31	10.24	19.41	19.42	14.83	9.27	5.50	3.30	1.48	0.58	0.24	0.16	0.17	100

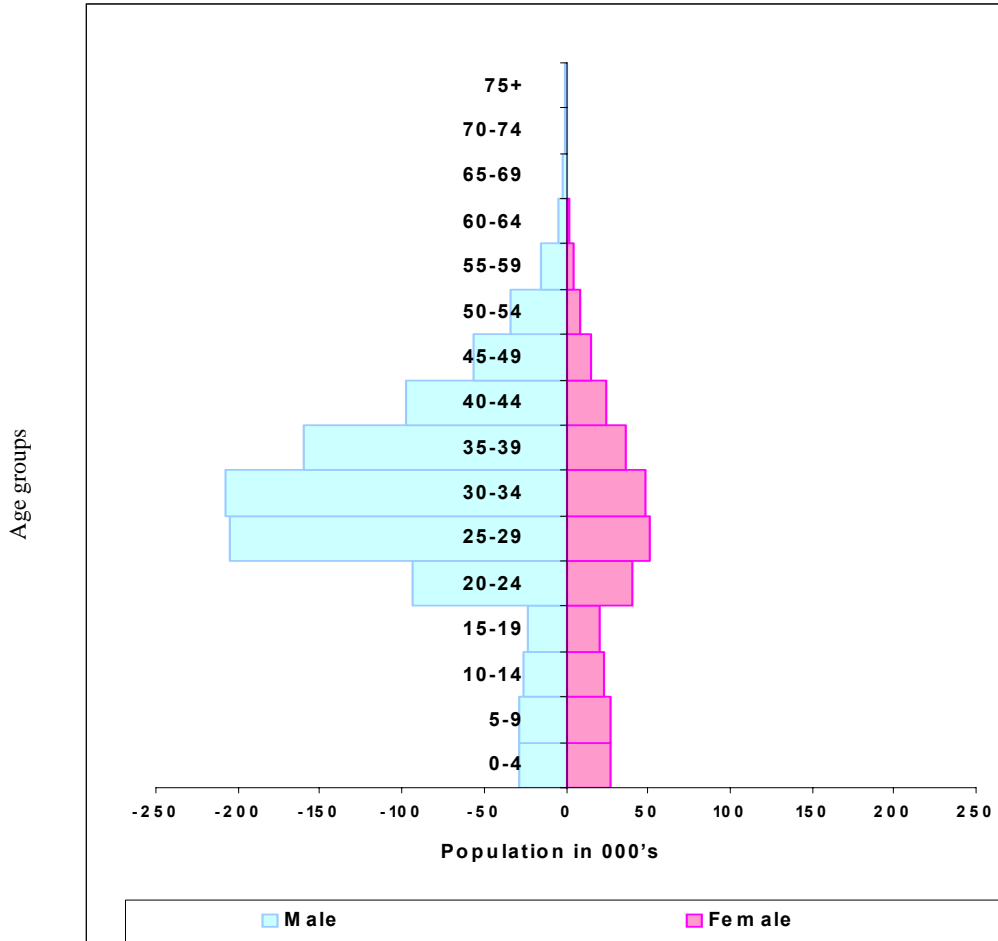
**The Percentage Distribution Population by Age groups - Emirate of Dubai
2005**



- From the figure it is noted that the age group (30-34) years has occupied the highest rank, whereas its individuals number has reached (256,638) persons representing (19.42%) of the total population, This is followed then by the age group (25-29) years, whereas its individuals number has reached (256,384) persons representing (19.40%)of the total population, As for the age groups (35-39) years, this has occupied the third rank, whereas its individuals number has reached (195,987) representing (14.83%) of the total population, This, however, indicates that the individuals concentration in the three age groups has been due to the non-local labour force required for the structure boom and those huge economic projects as one of the natural outcomes of the economic growth averages witnessed in the Emirate of Dubai .

Hence, the age distribution of the population is clearly represented through the following population pyramid showing facts as follows:

The Population Pyramid by age groups – Emirate of Dubai

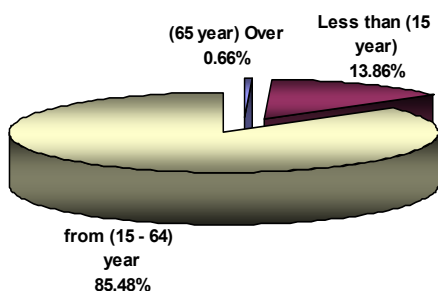


The Percentage Distribution of Population by age Dependency Between (2000 - 2005)

Population Dependency \ Years	2000	2005
Pop. Less Than (15 year) age	%17.66	%13.86
Pop. (65 year) and Over	%0.65	%0.66
Total	%18.31	%14.52

The Percentage of Dependency in the year 2005 for Population at dependency age is (14.52%) comparing (18.31%) in the year 2000

The Percentage Distribution of persons in age Dependent comparing with person in age working Emirate of Dubai 2005



The Percentage Distribution of persons in age Dependent comparing with person in age working Emirate of Dubai 2000

